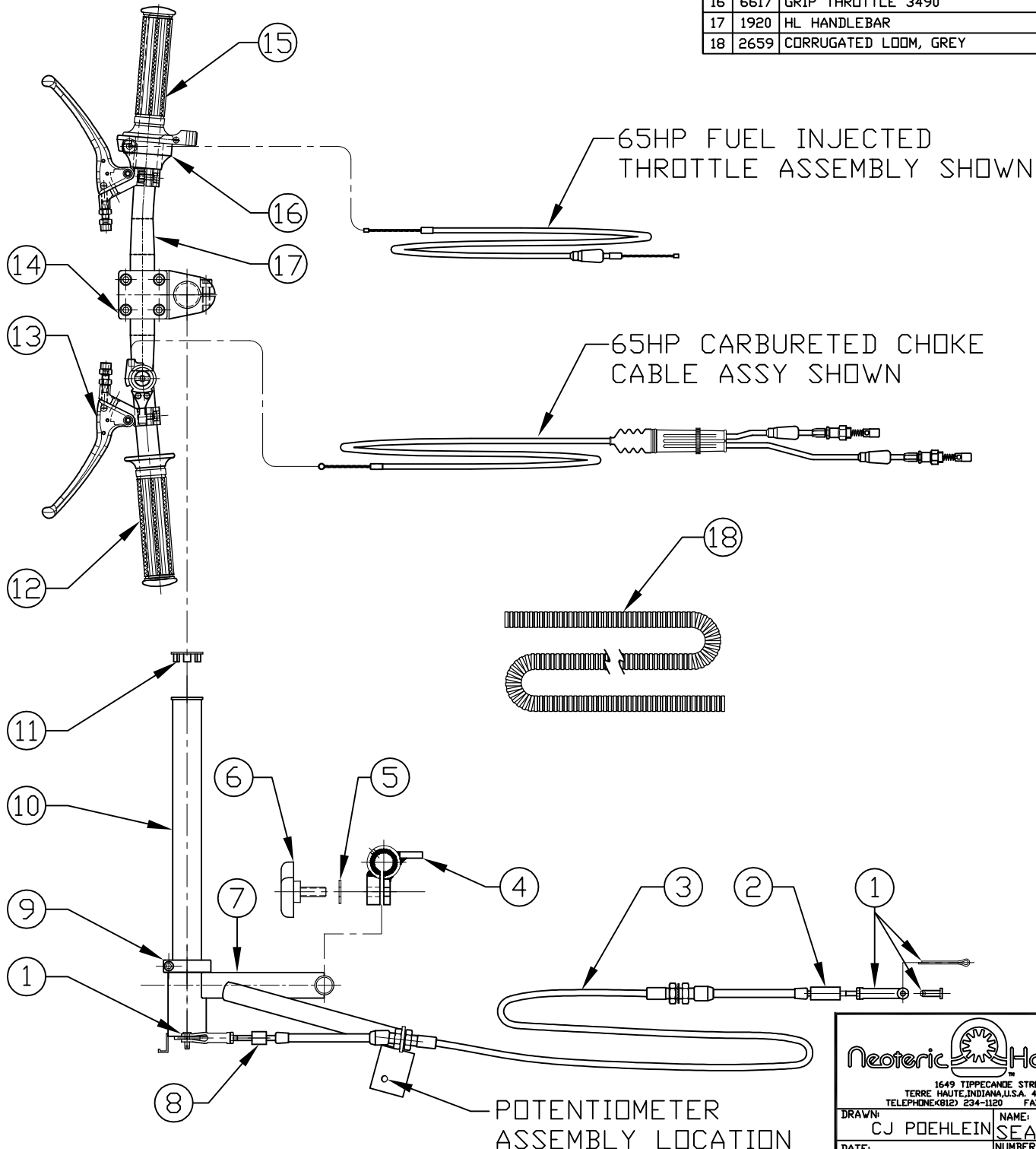


NOTES:

1) SHOWN WITH 309 SERIES CONTROLS

2) SEE FORM #17359 FOR CABLE PART NUMBERS

BILL OF MATERIAL		
REF.	PART #	DESCRIPTION
1	5829	CLEVIS ASSY, MODIFIED
2	3805	RUDDER CABLE STOP, REAR
3	3644	HT4 RUDDER CABLE
3	5640	HT6 RUDDER CABLE
4	5703	STEERING CLAMP ASSY
5	2474	WASHER
6	3531	5-STAR CLAMPING KNDB
7	3803	SXS CONTROLS, SLIDER ASSEMBLY
8	3804	RUDDER CABLE STOP, FORWARD
9	3587	SHAFT COLLAR, AL
10	3925	HT STEERING COLUMN ASSY
11	3728	END CAP
12	3492	PORT GRIP
13	7369	REVERSE THRUST CONTROL LEVER
14	6539	HT HANDLEBAR CLAMP, BLACK MODIFIED
15	7364	PLASTIC SINGLE CABLE THROTTLE
16	6617	GRIP THROTTLE 3490
17	1920	HL HANDLEBAR
18	2659	CORRUGATED LOOM, GREY



Neoteric  Hovercraft Inc.

1649 TIPPECANOE STREET
 TERRE HAUTE, INDIANA, U.S.A. 47807-2394
 TELEPHONE (812) 234-1120 FAX (812) 234-3217

DRAWN:	CJ POEHLIN	NAME:	SIDE BY SIDE SEAT CONTROLS
DATE:	18 DEC, 2012	NUMBER:	17110
		REV:	2