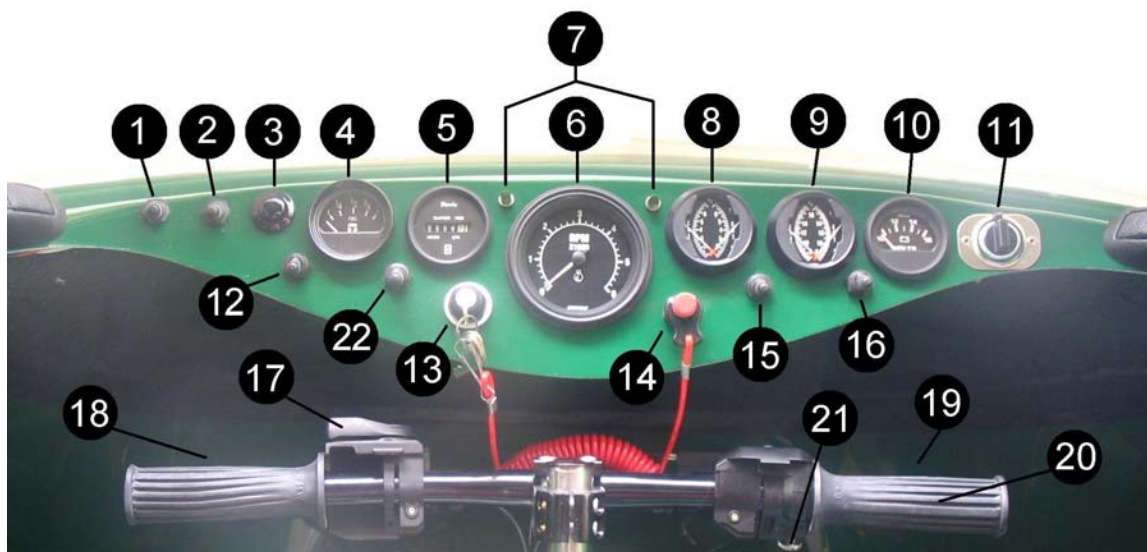


## Neoteric Hovertrek Deluxe with reverse system

Instrumentation Panel and Control Details for 4 Passenger

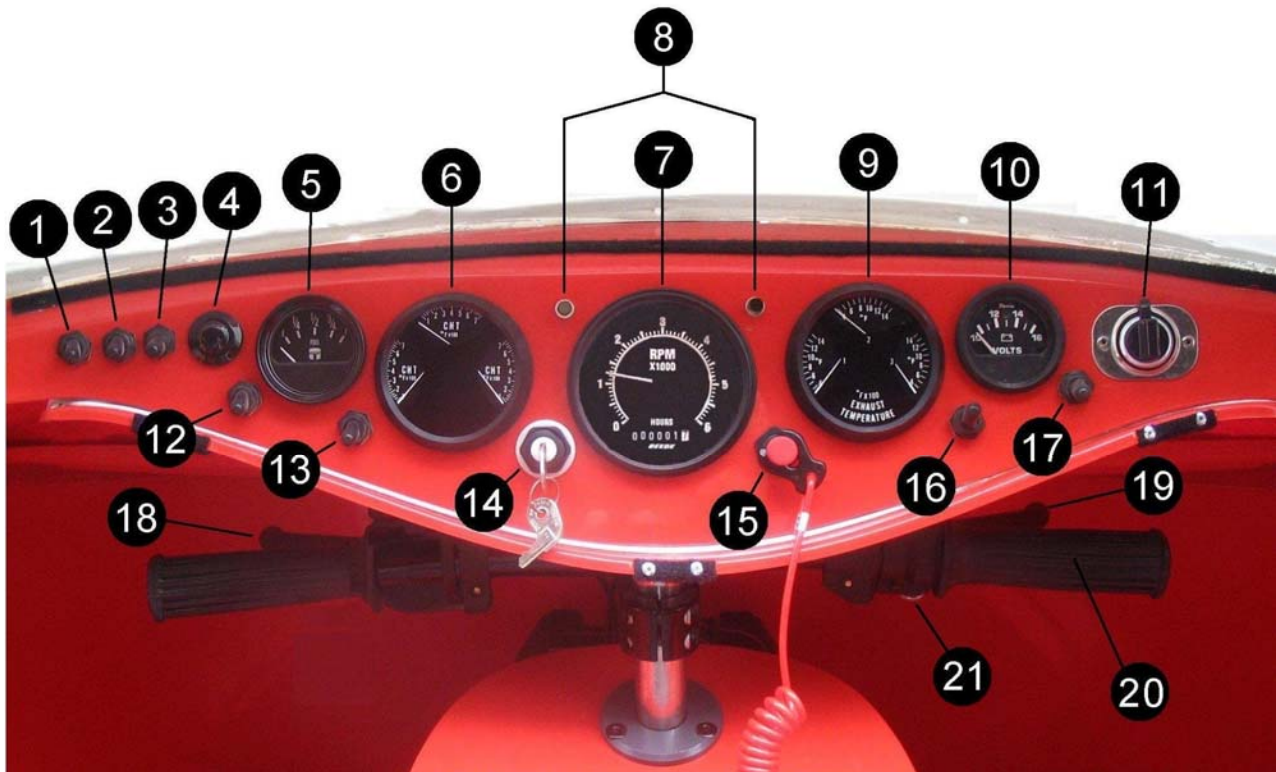


(Part #'s)

1. Headlight Switch (1652)
2. Navigation & Instrument Light Switch (1652)
3. Horn Button (2443)
4. Gasoline/Petrol Gauge (1628)
5. Hour Meter (6148)
6. Tachometer (5351)
7. Reverse Thrust Diagnostic Lights (5633)
8. Engine 2 Cylinder Head Temperature (5326)
9. Engine 2 Exhaust Gas Temperature (5327)
10. Volt Meter (5817)
11. 12 Volt Supply Cigarette Plug (5688)
12. Bilge Pump (1652)
13. Ignition Switch (1884)
14. Kill Switch (1052)
15. Reverse Thrust On Off Switch (1652)
16. Reverse Thrust Reset Switch (2431)
17. Choke Lever (7348)
18. Port Reverse Thrust Control Lever (7369)
19. Starboard Reverse Thrust Control Lever (7369)
20. Throttle Grip (6617)
21. Throttle Cruise Control Lock Screw or Lever (7444)
22. Electric Fuel Pump (1652)

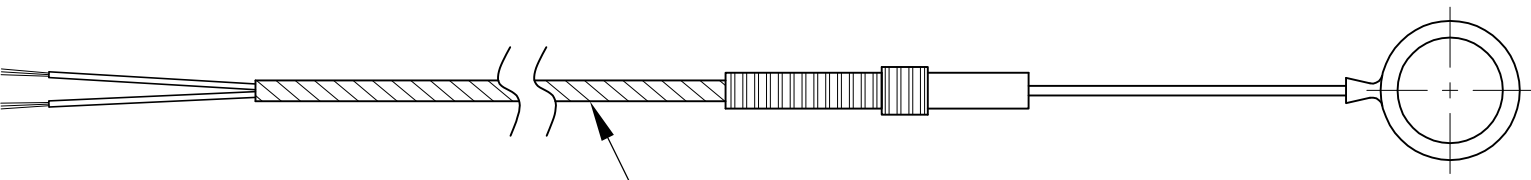
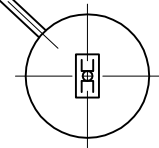
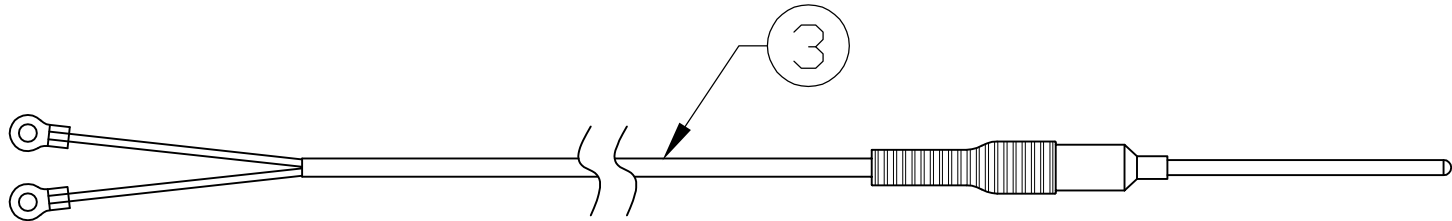
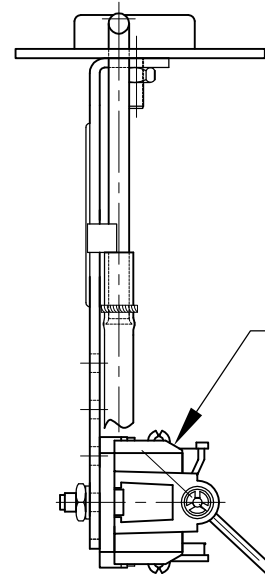
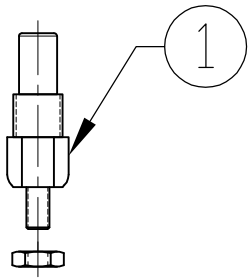
# Neoteric Hovertrek Deluxe with reverse system

Instrumentation Panel and Control Details for 6 Passenger




1. Strobe Emergency Light (1652)
2. Headlights (1652)
3. Navigation & Instrument Light Switch (1652)
4. Horn/Siren Button (2443)
5. Gasoline/Petrol Gauge (1628)
6. Engine Cylinder Head Temperature or Water Temperature, depending on gauge type (water temp gage 6166)
7. Tachometer and hour meter (5350)
8. Reverse Thrust Diagnostic Lights (5633)
9. Engine Exhaust Gas Temperature (5647)
10. Volt Meter (5817)
11. 12 Volt Supply Cigarette Plug (5688)
12. Bilge Pump (1652)
13. Electric Fuel Pump (1652)
14. Ignition Switch (1884)
15. Kill Switch (1052)
16. Reverse Thrust On Off Switch (1652)
17. Reverse Thrust Reset Switch for Calibration (2431)
18. Port Reverse Thrust Control Lever (7369)
19. Starboard Reverse Thrust Control Lever (7369)
20. Throttle Grip (6617)
21. Throttle Cruise Control Lock Screw or Lever (7444)

BILL OF MATERIAL		
REF.	PART #	DESCRIPTION
1	6277	WATER TEMP SENDER
2	7479	FUEL SENDER
3	7719	EGT TEMPERATURE PROBE
4	7928	CHT TEMPERATURE SENSOR



SIG. NO.	REVISION	DATE


  
 1649 TIPPECANOE STREET  
 TERRE HAUTE, INDIANA, U.S.A. 47807-2394  
 TELEPHONE (812) 234-1120 FAX (812) 234-3217

DRAWN: CJ POEHLEIN	NAME: HOVERTREK SENDERS
DATE: 9 JUN, 2015	NUMBER: 16647
	REV. 2